



Samsung SPH-M360 Keyboard Replacement

This guide will show the user how to replace the keyboard on the Samsung SPH-M360

Written By: Hunter Parker



INTRODUCTION

This guide will require no more than a finger.



TOOLS:

- [Phillips #0 Screwdriver](#) (1)
 - [iFixit Opening Tools](#) (1)
-

Step 1 — Battery



- Locate the arrow on the panel of the rear side of the phone.
- Use one or two fingers to apply light pressure downwards on the rear panel and push or pull in the direction of the arrow.

Step 2



- Place finger inside the small semi-spherical slot near the top of the battery.
- Lightly pull the battery away from the phone. This should not require much effort.

Step 3 — Casing



- Remove the four screws on the corners of the casing.

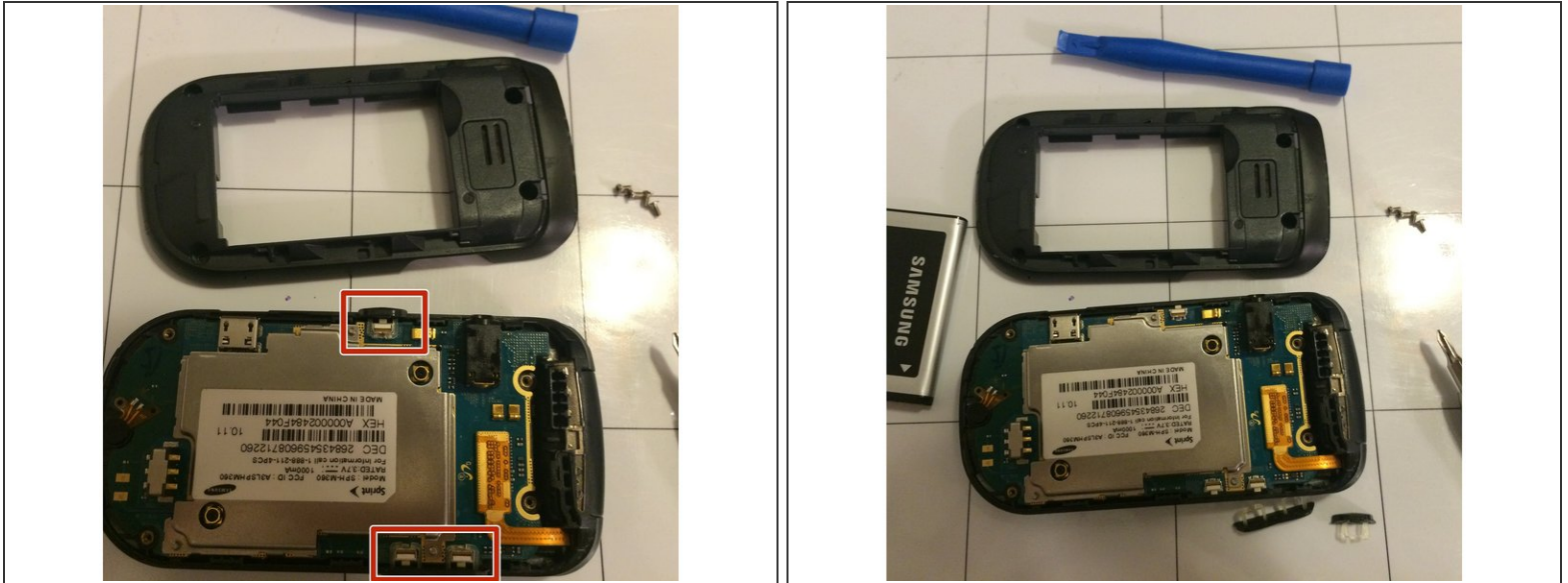
⚠ The volume and camera buttons may fall out

Step 4



- Starting near the top of the casing, use the plastic opening tool to gently pry the casing open.
 - ⓘ The case should require some effort to pry open, but do not use excessive force for risk of breaking the rear panel.
- Slowly work the plastic opening tool around the edge of the casing, gently prying it around at all sides.

Step 5



- Once the casing has been fully pried off of the phone, it should be easily removed by hand.
- ⚠ The buttons for the camera and volume may fall out while removing the casing. Be careful not to lose the small pieces.

Step 6 — Keyboard



- Flip open the phone so that the text on the keyboard is visible.
- Push from the text side until the keyboard comes completely out of the phone casing.

To reassemble your device, follow these instructions in reverse order.